

# PULSAR

INSTRUCTION MANUAL FOR WATCH CALIBRE  
VD51



**WARNING**



**THIS PRODUCT CONTAINS A BUTTON BATTERY**

If swallowed or placed inside any part of the body, the battery can cause severe or fatal injuries within 2 hours or less.

Button batteries are hazardous whether new or used. Keep batteries out of reach of children.

If you think the battery may have been swallowed or placed inside any part of the body, seek immediate medical attention. Contact the Australian Poisons Information Centre immediately on 13 11 26 (New Zealand 0800 764 766) for 24 / 7 fast, expert advice.

# PULSAR

## CAL. VD51 CHRONOGRAPH

### TIME/CALENDAR

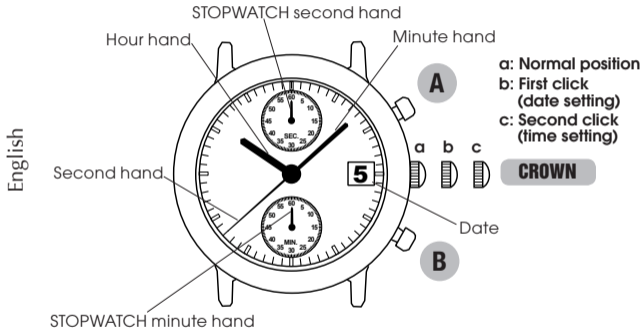
- Hour, minute and second hands
- Date displayed in numerals

### STOPWATCH

- Measures up to 60 minutes in 1-second increments
- Split time measurement

ENGLISH

## DISPLAY AND CROWN/BUTTONS



## SCREW DOWN CROWN

[for models with screw down crown]

### Unlocking the crown

- 1 Turn Crown counterclockwise until you no longer feel the threads turning.
- 2 Crown can be pulled out.



### Locking the crown

- 1 Push Crown back in to normal position.
- 2 Turn Crown clockwise while pressing it lightly until tight.



## STOPWATCH HAND POSITION ADJUSTMENT

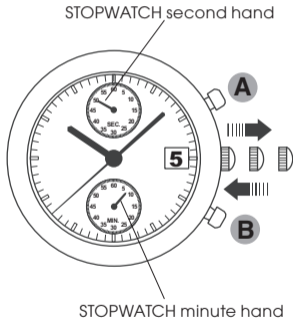
- Before setting the time, be sure to check that the STOPWATCH second and minute hands return to the “0” position when the stopwatch is reset.

### HOW TO RESET THE STOPWATCH

If the stopwatch is in use, press the buttons in the following order to reset it, and then, check if the STOPWATCH hands are at the “0” position.

- Case 1** If the stopwatch is measuring, press the button A to stop it, and then press the button B to reset it.
- Case 2** If the stopwatch is stopped, press the button B to reset it.
- Case 3** If the split time is displayed, press the button B to return the display to the normal display mode, and press the button A to stop the stopwatch. And then, press the button B again to reset it.

If any **STOPWATCH** hands do not return to the "0" position when the stopwatch is reset, reset the positions of the **STOPWATCH** hands by following the procedure below.



**CROWN**

Pull out to second click.



**A**

Press to reset the position of the **STOPWATCH** second hand to the "0" position.

**OR**

**B**

Press to reset the position of the **STOPWATCH** minute hand to the "0" position.

*The hands move quickly if the respective buttons are kept pressed.*



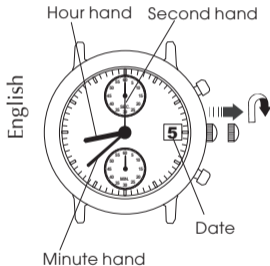
**CROWN**

Push back in to normal position.

English

## TIME SETTING

- Before setting the time, check that the stopwatch measurement is stopped.



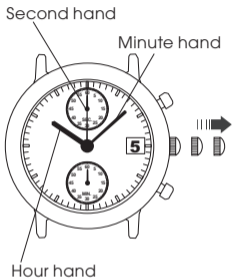
### CROWN

Pull out to first click, and turn clockwise until the previous day's date appears.

*Do not set the date between 9:00 P.M. and 1:00 A.M. Otherwise, the date may not change properly.*

*If it is necessary to set the date during that time period, first change the time to any time outside it, set the date, and then reset the time to the correct time.*





**CROWN**

Pull out when the second hand is at the 12 o'clock position.

The second hand will stop on the spot.

*When the crown is at the second click position, do not press any button, as doing so will start the stopwatch.*

**CROWN**

Turn to set the hour and minute hands to the desired time.

*When setting the hour hand, check that the AM/PM is correctly set.  
When setting the minute hand, first advance it 4 to 5 minutes ahead of the desired time and then turn it back to the exact minute.*

**CROWN**

Push back in to normal position in accordance with a time signal.

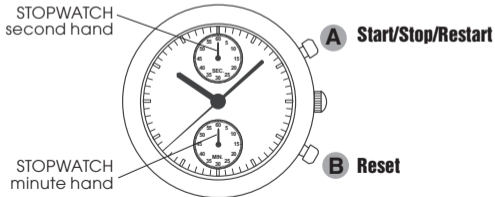
English

# STOPWATCH

- The stopwatch measures up to 60 minutes in 1-second increments.
- The measured time is indicated by the STOPWATCH hands that move independently of the hands for time display.
- Before using the stopwatch, be sure to check that the crown is set at the normal position and that the STOPWATCH hands are reset to the "0" position.

*If the STOPWATCH hands do not return to the "0" position when the stopwatch is reset to "0", follow the procedure in "STOPWATCH HAND POSITION ADJUSTMENT".*

English



**Standard measurement**

Ex. 100m race

**Accumulated elapsed time measurement**

Ex. Basketball game



- *Restart and stop of the stopwatch can be repeated as many times as necessary by pressing the button A.*

**Split time measurement**

Ex. 5,000m race



- *Measurement and release of the split time can be repeated as many times as necessary by pressing the button B.*

## BATTERY CHANGE

**2**  
**Years**

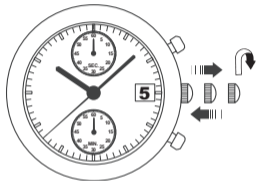
**Battery life : Approx. 2 years**

**Battery : SEIKO SR920SW**

- *If the stopwatch is used for more than 60 minutes a day, the battery life may be less than the specified period.*
- *As the battery is inserted at the factory to check the function and performance of the watch, its actual life once in your possession may be less than the specified period.*
- *When the battery expires, be sure to replace it as soon as possible to prevent any malfunction.*
- *We recommend that you contact an AUTHORIZED PULSAR DEALER for battery replacement.*
- *After the battery is replaced with a new one, adjust the stopwatch hand position and set the time.*

## ● Necessary procedure after battery change

After the battery is replaced with a new one, or in case any of the hands should move improperly, follow the procedure below to reset the hands to the "0" position.



*The STOPWATCH minute hand moves correspondingly with the STOPWATCH second hand.*

*The hands move quickly if the respective buttons are kept pressed.*

**CROWN** Pull out to second click.

**A AND B** Press and hold simultaneously for 2 seconds or longer.

*The STOPWATCH second hand turns half a circle counterclockwise, and then returns to where it was.*

**A** Press to reset the position of the STOPWATCH second hand to the "0" position.

**B** Press to reset the position of the STOPWATCH minute hands to the "0" position.

**CROWN** Turn to set the hour and minute hands to the desired time.

**CROWN** Push back in to normal position.

English

**WARNING**

- Do not remove the battery from the watch.
- If it is necessary to take out the battery, keep it out of the reach of children. If a child swallows it, consult a doctor immediately.
- Never short-circuit, tamper with or heat the battery, and never expose it to fire. The battery may burst, become very hot or catch fire.

**CAUTION**

- The battery is not rechargeable. Never attempt to recharge it, as this may cause battery leakage or damage to the battery.

## TO PRESERVE THE QUALITY OF YOUR WATCH

### WATER RESISTANCE

#### ● Non-water resistant



If “WATER RESISTANT” is not inscribed on the case back, your watch is not water resistant, and care should be taken not to get it wet as water may damage the movement. If the watch becomes wet, we suggest that you have it checked by an AUTHORIZED PULSAR DEALER or SERVICE CENTER.

#### ● Water resistance (3 bar)



If “WATER RESISTANT” is inscribed on the case back, your watch is designed and manufactured to withstand up to 3 bar, such as accidental contact with splashes of water or rain, but it is not designed for swimming or diving.

#### ● Water resistance (5 bar)\*



If “WATER RESISTANT 5 BAR” is inscribed on the case back, your watch is designed and manufactured to withstand up to 5 bar and is suitable for swimming, yachting and taking a shower.

#### ● Water resistance (10 bar/15 bar/20 bar)\*



If “WATER RESISTANT 10 BAR”, “WATER RESISTANT 15 BAR” or “WATER RESISTANT 20 BAR” is inscribed on the case back, your watch is designed and manufactured to withstand up to 10 bar/15 bar/20 bar and is suitable for taking a bath, shallow diving, but not for scuba diving. We recommend that you wear a PULSAR Diver’s watch for scuba diving.

- \* *Before using the water resistance 5, 10, 15 or 20 bar watch in water, be sure the crown is pushed in completely.  
Do not operate the crown when the watch is wet or in water. If used in sea water, rinse the watch in fresh water and dry it completely.*
- \* *When taking a shower with the water resistance 5 bar watch, or taking a bath with the water resistance 10, 15 or 20 bar watch, be sure to observe the following:*
  - *Do not operate the crown when the watch is wet.*
  - *If the watch is left in warm water, a slight time loss or gain may be caused. This condition, however, will be corrected when the watch returns to normal temperature.*

**NOTE:**

*Pressure in bar is a test pressure and should not be considered as corresponding to actual diving depth since swimming movement tends to increase the pressure at a given depth. Care should also be taken on diving into water.*

**TEMPERATURES**

Your watch works with stable accuracy within a temperature range of 5° C and 35° C (41° F and 95° F).  
Temperatures over

50° C (122° F) may cause battery leakage or shorten the battery life.

Do not leave your watch in very low temperatures below -5° C (+23° F) for a long time since the cold may cause a slight time loss or gain. However, the above conditions will be corrected when the watch returns to normal temperature.



## MAGNETISM



Your watch will be adversely affected by strong magnetism. Keep it away from close contact with magnetic objects.

## SHOCKS & VIBRATION



Light activities will not affect your watch, but be careful not to drop your watch or hit it against hard surfaces, as this may cause damage.

## CHEMICALS



Be careful not to expose the watch to solvents, mercury, cosmetic spray, detergents, adhesives or paints. Otherwise, the case, bracelet, etc. may become discolored, deteriorated or damaged.

## CARE OF CASE AND BRACELET



To prevent possible rusting of the case and bracelet caused by dust, moisture and perspiration, wipe them periodically with a soft dry cloth.

## PERIODIC CHECK



It is recommended that the watch be checked once every 2 to 3 years. Have your watch checked by an **AUTHORIZED PULSAR DEALER** or **SERVICE CENTER** to ensure that the case, crown, buttons, gasket and crystal seal remain intact.

## PRECAUTION REGARDING CASE BACK PROTECTIVE FILM



If your watch has a protective film and/or a sticker on the case back, be sure to peel them off before using your watch.