

PULSAR

INSTRUCTION MANUAL FOR WATCH CALIBRE
5Y85



WARNING



THIS PRODUCT CONTAINS A BUTTON BATTERY

If swallowed or placed inside any part of the body, the battery can cause severe or fatal injuries within 2 hours or less.

Button batteries are hazardous whether new or used. Keep batteries out of reach of children.

If you think the battery may have been swallowed or placed inside any part of the body, seek immediate medical attention. Contact the Australian Poisons Information Centre immediately on 13 11 26 (New Zealand 0800 764 766) for 24 / 7 fast, expert advice.

PULSAR

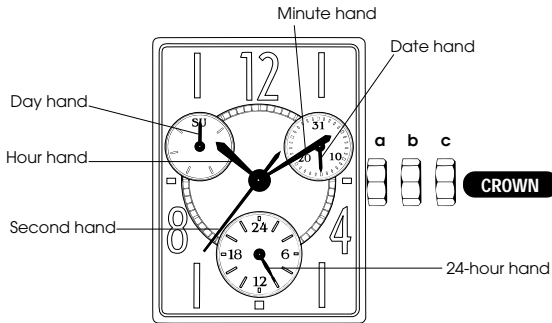
CAL. 5Y85 ANALOGUE QUARTZ

- Time indicates by the hour, minute and second hands
- Date indicates by the date hand
- Day of the week indicates by the day hand
- The 24-hour hand indicates the hour in the 24-hour indication

ENGLISH

DISPLAY AND CROWN

English



a. Normal position

b. First click

c. Second click

SCREW DOWN CROWN

[for models with screw down crown]

Unlocking the crown

- 1 Turn Crown counterclockwise until you no longer feel the threads turning.
- 2 Crown can be pulled out.



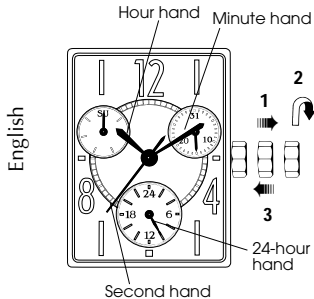
Locking the crown

- 1 Push Crown back in to normal position.
- 2 Turn Crown clockwise while pressing it lightly until tight.



TIME, DAY AND 24-HOUR HAND SETTING

TIME SETTING



CROWN

- 1 Pull out the crown all the way to the second click when the second hand is at the 12 o'clock position. The second hand will stop on the spot.

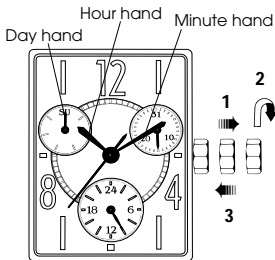
CROWN

- 2 Turn the crown to set the time and 24-hour hand.

** As the hour and minute hands move, the 24-hour hand changes correspondingly.*

- 3 Push the crown back into the normal position in accordance with a time signal.

DAY SETTING



- 1 Pull out the crown to the second click.

CROWN

- 2 Turn the crown clockwise to advance the hour and minute hands until the day hand is advanced to the desired day.

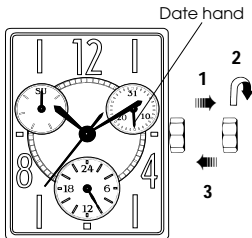
** The day hand will not move back.*

- 3 Push the crown back into the normal position.

HOW TO SET THE DATE

Setting the date

English



CROWN

- 1 Pull out the crown to the first click.
- 2 Turn the crown clockwise to set the date hand to the desired date.
- 3 Push in.

NOTES ON OPERATING THE WATCH

TIME/DATE SETTING

- When setting the hour hand and 24-hour hand, check that AM/PM is correctly set. The watch is so designed that the date and day change once in 24 hours.
- When setting minute hand, first advance it 4 to 5 minutes ahead of the desired time and then turn it back to the exact minute.
- When setting the date, be careful not to pull out the crown to the second click instead of the first click. Otherwise, the second hand stops and the time setting is made necessary.
- To advance the day hand quickly, turn back the hour and minute hands about four hours after the day changes to the next, and then advance them again until the day hand is set to the next.

BATTERY CHANGE

3
Years

Battery life : Approx. 3 years

Battery : SEIKO SR916SW

- *As the battery is inserted at the factory to check the function and performance of the watch, its actual life once in your possession may be less than the specified period.*
- *When the battery expires, be sure to replace it as soon as possible to prevent any malfunction.*
- *We recommend that you contact an AUTHORIZED PULSAR DEALER for battery replacement.*



WARNING

- Do not remove the battery from the watch.
- If it is necessary to take out the battery, keep it out of the reach of children. If a child swallows it, consult a doctor immediately.
- Never short-circuit, tamper with or heat the battery, and never expose it to fire. The battery may burst, become very hot or catch fire.



CAUTION

- The battery is not rechargeable. Never attempt to recharge it, as this may cause battery leakage or damage to the battery.

TO PRESERVE THE QUALITY OF YOUR WATCH

WATER RESISTANCE

● Non-water resistant



If "WATER RESISTANT" is not inscribed on the case back, your watch is not water resistant, and care should be taken not to get it wet as water may damage the movement. If the watch becomes wet, we suggest that you have it checked by an AUTHORIZED PULSAR DEALER or SERVICE CENTER.

● Water resistance (3 bar)



If "WATER RESISTANT" is inscribed on the case back, your watch is designed and manufactured to withstand up to 3 bar, such as accidental contact with splashes of water or rain, but it is not designed for swimming or diving.

● Water resistance (5 bar)*



If "WATER RESISTANT 5 BAR" is inscribed on the case back, your watch is designed and manufactured to withstand up to 5 bar and is suitable for swimming, yachting and taking a shower.

● Water resistance (10 bar/15 bar/20 bar)*



If "WATER RESISTANT 10 BAR", "WATER RESISTANT 15 BAR" or "WATER RESISTANT 20 BAR" is inscribed on the case back, your watch is designed and manufactured to withstand up to 10 bar/15 bar/20 bar and is suitable for taking a bath, shallow diving, but not for scuba diving. We recommend that you wear a PULSAR Diver's watch for scuba diving.

- * *Before using the water resistance 5, 10, 15 or 20 bar watch in water, be sure the crown is pushed in completely.
Do not operate the crown when the watch is wet or in water. If used in sea water, rinse the watch in fresh water and dry it completely.*
- * *When taking a shower with the water resistance 5 bar watch, or taking a bath with the water resistance 10, 15 or 20 bar watch, be sure to observe the following:*
 - *Do not operate the crown when the watch is wet with soapy water or shampoo.*
 - *If the watch is left in warm water, a slight time loss or gain may be caused. This condition, however, will be corrected when the watch returns to normal temperature.*

NOTE:

Pressure in bar is a test pressure and should not be considered as corresponding to actual diving depth since swimming movement tends to increase the pressure at a given depth. Care should also be taken on diving into water.

TEMPERATURES



Your watch works with stable accuracy within a temperature range of 5° C and 35° C (41° F and 95° F).

Temperatures over 60° C (140° F) may cause battery leakage or shorten

the battery life. Do not leave your watch in very low temperatures below -10° C (+14° F) for a long time since the cold may cause a slight time loss or gain.

However, the above conditions will be corrected when the watch returns to normal temperature.

MAGNETISM

Your watch will be adversely affected by strong magnetism. Keep it away from close contact with magnetic objects.

SHOCKS & VIBRATION

Light activities will not affect your watch, but be careful not to drop your watch or hit it against hard surfaces, as this may cause damage.

CHEMICALS

Be careful not to expose the watch to solvents, mercury, cosmetic spray, detergents, adhesives or paints. Otherwise, the case, bracelet, etc. may become discolored, deteriorated or damaged.

CARE OF CASE AND BRACELET

To prevent possible rusting of the case and bracelet caused by dust, moisture and perspiration, wipe them periodically with a soft dry cloth.

PERIODIC CHECK

It is recommended that the watch be checked once every 2 to 3 years. Have your watch checked by an **AUTHORIZED PULSAR DEALER** or **SERVICE CENTER** to ensure that the case, crown, buttons, gasket and crystal seal remain intact.

PRECAUTION REGARDING CASE BACK PROTECTIVE FILM

If your watch has a protective film and/or a sticker on the case back, be sure to peel them off before using your watch.